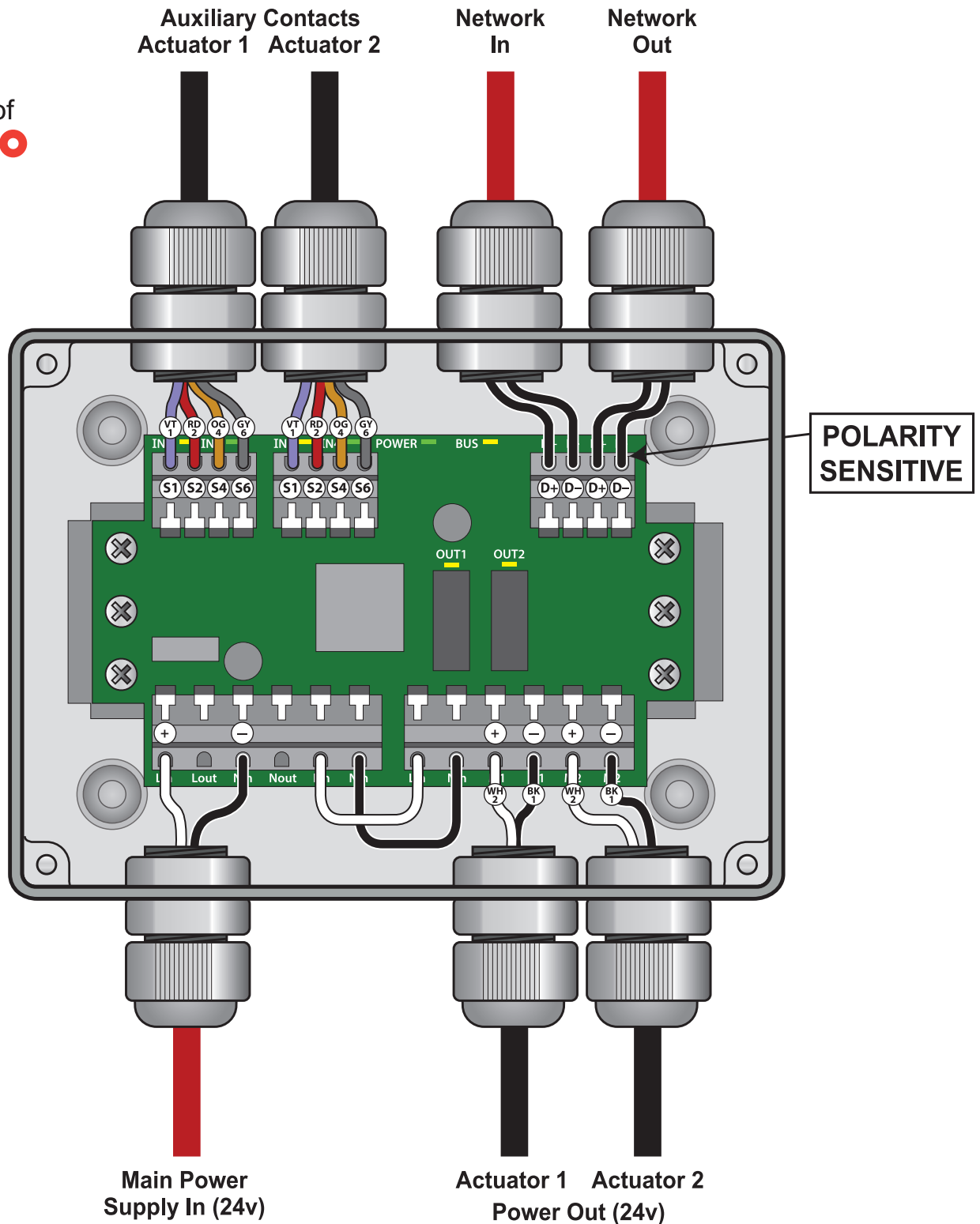




A brand of  
**MAICO**

# ADM24D Terminal Connections



## Site Wiring (By Others):

To be used in conjunction with 'Typical ACP Panel Schematic Wiring (24V Actuators)', for full instructions.

## General:

Each ADM damper module must be connected to a 24V unswitched fused supply.

ADM Damper Module Terminals will accept up to 2.5mm cables.

**Important:** Please ensure when using screwdrivers on terminal levers, not to use excessive force and ensure the screwdriver sits squarely on the lever tab. ADM's with damaged terminals **will not** be covered by warranty.